



AiP74LVC1G175

Single D-type Flip-flop with Reset; Positive-edge Trigger

Product Specification

Specification Revision History:

Version	Date	Description
2023-06-A1	2023-06	New
2026-03-A2	2026-03	Add XSON6 package form; add ESD; update package information



Contents

1、 General Description.....	3
2、 Block Diagram And Pin Description	4
2.1、 Block Diagram	4
2.2、 Pin Configurations.....	4
2.3、 Pin Description	5
2.4、 Function Table.....	5
3、 Electrical Parameter	5
3.1、 Absolute Maximum Ratings.....	5
3.2、 Recommended Operating Conditions.....	6
3.3、 Electrical Characteristics	6
3.3.1、 DC Characteristics 1	6
3.3.2、 DC Characteristics 2	7
3.3.3、 AC Characteristics 1	8
3.3.4、 AC Characteristics 2	9
4、 Testing Circuit	10
4.1、 AC Testing Circuit	10
4.2、 Test Data	10
4.3、 AC Testing Waveforms.....	11
4.4、 Measurement Points	11
5、 Package Information	12
5.1、 SOT23-6.....	12
5.2、 SOT363	13
5.3、 XSON6(1*1.45*0.55)-0.5	14
5.4、 XSON6(1*1*0.45)-0.35	15
6、 Statements And Notes	16
6.1、 The name and content of Hazardous substances or Elements in the product.....	16
6.2、 Notes	16



1、General Description

The AiP74LVC1G175 is a low-power, low-voltage single positive edge triggered D-type flip-flop with individual data (D) input, clock (CP) input, master reset ($\overline{\text{MR}}$) input, and Q output.

The input can be driven from either 3.3V or 5V devices. This feature allows the use of this device in a mixed 3.3V and 5V environment.

Features:

- Wide supply voltage range from 1.65V to 5.5V
- Inputs accept voltages to 5.5 V
- $\pm 24\text{mA}$ output drive at 3.0V
- High-impedance when $V_{\text{CC}}=0\text{V}$
- Temperature range: -40°C to $+125^{\circ}\text{C}$
- Packaging information: SOT23-6/SOT363/XSON6

Ordering Information:

Reel packing specifications:

Part number	Packaging form	Marking code	Reel quantity	Boxed reel quantity	Notes
AiP74LVC1G175GB236.TR	SOT23-6	ENXX	3000 PCS/reel	30000 PCS/box	Dimensions of plastic enclosure: 2.9mm×1.6mm Pin spacing: 0.95mm
AiP74LVC1G175GC363.TR	SOT363	ENXX	3000 PCS/reel	30000 PCS/box	Dimensions of plastic enclosure: 2.1mm×1.3mm Pin spacing: 0.65mm
AiP74LVC1G175EA6.TR	XSON6	EN XX	5000 PCS/reel	25000 PCS/box	Dimensions of plastic enclosure: 1.45mm×1.0mm Pin spacing: 0.5mm
AiP74LVC1G175ED6.TR	XSON6	EN XX	5000 PCS/reel	25000 PCS/box	Dimensions of plastic enclosure: 1.0mm×1.0mm Pin spacing: 0.35mm

Note 1: “XX” refers to variable content, meaning package batch serial number.

Note 2: If the physical information is inconsistent with the ordering information, please refer to the actual product.



2、Block Diagram And Pin Description

2.1、Block Diagram

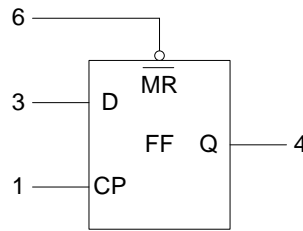


Figure 1. Logic symbol

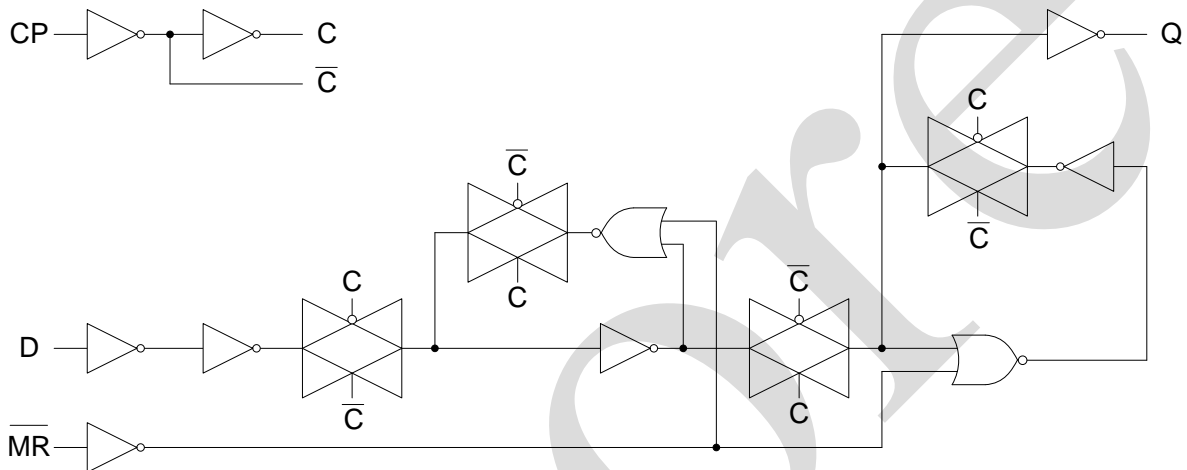
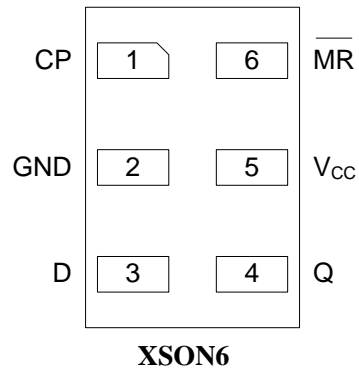
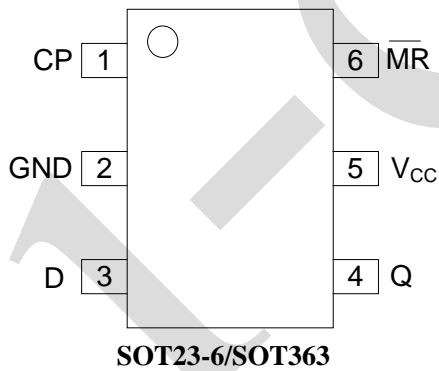


Figure 2. Logic diagram

2.2、Pin Configurations





2.3、Pin Description

Pin No.	Pin Name	Description
1	CP	clock input (LOW-to-HIGH, edge-triggered)
2	GND	ground (0V)
3	D	data input
4	Q	data output
5	V _{CC}	supply voltage
6	$\overline{\text{MR}}$	master reset input (active LOW)

2.4、Function Table

Operating mode	Input			Output
	$\overline{\text{MR}}$	CP	D	Q
Reset(clear)	L	X	X	L
Load '1'	H	↑	h	H
Load '0'	H	↑	l	L

Note:

H=HIGH voltage level; L=LOW voltage level.

h = HIGH voltage level one set-up time prior to the LOW-to-HIGH CP transition;

l = LOW voltage level one set-up time prior to the LOW-to-HIGH CP transition;

↑ = LOW-to-HIGH CP transition

X = don't care

3、Electrical Parameter

3.1、Absolute Maximum Ratings

(Voltages are referenced to GND (ground = 0V), unless otherwise specified.)

Parameter	Symbol	Conditions	Min.	Max.	Unit
supply voltage	V _{CC}	-	-0.5	+6.5	V
input voltage	V _I	-	-0.5	+6.5	V
output voltage	V _O	Active mode	-0.5	V _{CC} +0.5	V
		Power-down mode; V _{CC} =0V	-0.5	+6.5	V
supply current	I _{CC}	-	-	100	mA
ground current	I _{GND}	-	-100	-	mA
input clamping current	I _{IK}	V _I < 0V	-50	-	mA
output current	I _O	V _O =0V to V _{CC}	-	±50	mA
output clamping current	I _{OK}	V _O > V _{CC} or V _O < 0V	-	±50	mA
storage temperature	T _{stg}	-	-65	+150	°C
soldering temperature	T _L	10s	260		°C
electrostatic discharge	ESD	HBM	2000		V



3.2、Recommended Operating Conditions

Parameter	Symbol	Conditions	Min.	Typ.	Max.	Unit
supply voltage	V_{CC}	-	1.65	-	5.5	V
input voltage	V_I	-	0	-	5.5	V
output voltage	V_O	Active mode	0	-	V_{CC}	V
		Power-down mode; $V_{CC}=0V$	0	-	5.5	V
ambient temperature	T_{amb}	-	-40	-	+125	°C

3.3、Electrical Characteristics

3.3.1、DC Characteristics 1

($T_{amb}=-40^{\circ}C$ to $+85^{\circ}C$, voltages are referenced to GND (ground = 0V), unless otherwise specified.)

Parameter	Symbol	Conditions	Min.	Typ.	Max.	Unit	
HIGH-level input voltage	V_{IH}	$V_{CC}=1.65V$ to $1.95V$	$0.65 \times V_{CC}$	-	-	V	
		$V_{CC}=2.3V$ to $2.7V$	1.7	-	-	V	
		$V_{CC}=2.7V$ to $3.6V$	2.0	-	-	V	
		$V_{CC}=4.5V$ to $5.5V$	$0.7 \times V_{CC}$	-	-	V	
LOW-level input voltage	V_{IL}	$V_{CC}=1.65V$ to $1.95V$	-	-	$0.35 \times V_{CC}$	V	
		$V_{CC}=2.3V$ to $2.7V$	-	-	0.7	V	
		$V_{CC}=2.7V$ to $3.6V$	-	-	0.8	V	
		$V_{CC}=4.5V$ to $5.5V$	-	-	$0.3 \times V_{CC}$	V	
HIGH-level output voltage	V_{OH}	$V_I = V_{IH}$ or V_{IL}	$I_O=-100\mu A$; $V_{CC}=1.65V$ to $5.5V$	$V_{CC} - 0.1$	-	-	V
			$I_O=-4mA$; $V_{CC}=1.65V$	1.2	1.54	-	V
			$I_O=-8mA$; $V_{CC}=2.3V$	1.9	2.15	-	V
			$I_O=-12mA$; $V_{CC}=2.7V$	2.2	2.50	-	V
			$I_O=-24mA$; $V_{CC}=3.0V$	2.3	2.62	-	V
			$I_O=-32mA$; $V_{CC}=4.5V$	3.8	4.11	-	V
LOW-level output voltage	V_{OL}	$V_I = V_{IH}$ or V_{IL}	$I_O=100\mu A$; $V_{CC}=1.65V$ to $5.5V$	-	-	0.10	V
			$I_O=4mA$; $V_{CC}=1.65V$	-	0.07	0.45	V
			$I_O=8mA$; $V_{CC}=2.3V$	-	0.12	0.30	V
			$I_O=12mA$; $V_{CC}=2.7V$	-	0.17	0.40	V
			$I_O=24mA$; $V_{CC}=3.0V$	-	0.33	0.55	V
			$I_O=32mA$; $V_{CC}=4.5V$	-	0.39	0.55	V
input leakage current	I_I	$V_I=5.5V$ or GND; $V_{CC}=0V$ to $5.5V$	-	-	± 1	μA	
power-off leakage current	I_{OFF}	V_I or $V_O=5.5V$; $V_{CC}=0V$	-	-	± 2	μA	
supply current	I_{CC}	$V_I=5.5V$ or GND; $I_O=0A$; $V_{CC}=1.65V$ to $5.5V$	-	-	4	μA	
additional supply current	ΔI_{CC}	$V_I=V_{CC}-0.6V$; $I_O=0A$; $V_{CC}=2.3V$ to $5.5V$	-	-	500	μA	

Note: Typical values are measured at $T_{amb}=25^{\circ}C$.



3.3.2、DC Characteristics 2

($T_{amb} = -40^{\circ}\text{C}$ to $+125^{\circ}\text{C}$, voltages are referenced to GND (ground = 0V), unless otherwise specified.)

Parameter	Symbol	Conditions	Min.	Typ.	Max.	Unit	
HIGH-level input voltage	V_{IH}	$V_{CC} = 1.65\text{V}$ to 1.95V	$0.65 \times V_{CC}$	-	-	V	
		$V_{CC} = 2.3\text{V}$ to 2.7V	1.7	-	-	V	
		$V_{CC} = 2.7\text{V}$ to 3.6V	2.0	-	-	V	
		$V_{CC} = 4.5\text{V}$ to 5.5V	$0.7 \times V_{CC}$	-	-	V	
LOW-level input voltage	V_{IL}	$V_{CC} = 1.65\text{V}$ to 1.95V	-	-	$0.35 \times V_{CC}$	V	
		$V_{CC} = 2.3\text{V}$ to 2.7V	-	-	0.7	V	
		$V_{CC} = 2.7\text{V}$ to 3.6V	-	-	0.8	V	
		$V_{CC} = 4.5\text{V}$ to 5.5V	-	-	$0.3 \times V_{CC}$	V	
HIGH-level output voltage	V_{OH}	$V_I = V_{IH}$ or V_{IL}	$I_O = -100\mu\text{A}$; $V_{CC} = 1.65\text{V}$ to 5.5V	$V_{CC} - 0.1$	-	-	V
			$I_O = -4\text{mA}$; $V_{CC} = 1.65\text{V}$	0.95	-	-	V
			$I_O = -8\text{mA}$; $V_{CC} = 2.3\text{V}$	1.7	-	-	V
			$I_O = -12\text{mA}$; $V_{CC} = 2.7\text{V}$	1.9	-	-	V
			$I_O = -24\text{mA}$; $V_{CC} = 3.0\text{V}$	2.0	-	-	V
			$I_O = -32\text{mA}$; $V_{CC} = 4.5\text{V}$	3.4	-	-	V
LOW-level output voltage	V_{OL}	$V_I = V_{IH}$ or V_{IL}	$I_O = 100\mu\text{A}$; $V_{CC} = 1.65\text{V}$ to 5.5V	-	-	0.10	V
			$I_O = 4\text{mA}$; $V_{CC} = 1.65\text{V}$	-	-	0.70	V
			$I_O = 8\text{mA}$; $V_{CC} = 2.3\text{V}$	-	-	0.45	V
			$I_O = 12\text{mA}$; $V_{CC} = 2.7\text{V}$	-	-	0.60	V
			$I_O = 24\text{mA}$; $V_{CC} = 3.0\text{V}$	-	-	0.80	V
			$I_O = 32\text{mA}$; $V_{CC} = 4.5\text{V}$	-	-	0.80	V
input leakage current	I_I	$V_I = 5.5\text{V}$ or GND; $V_{CC} = 0\text{V}$ to 5.5V	-	-	± 1	μA	
power-off leakage current	I_{OFF}	V_I or $V_O = 5.5\text{V}$; $V_{CC} = 0\text{V}$	-	-	± 2	μA	
supply current	I_{CC}	$V_I = 5.5\text{V}$ or GND; $I_O = 0\text{A}$; $V_{CC} = 1.65\text{V}$ to 5.5V	-	-	4	μA	
additional supply current	ΔI_{CC}	$V_I = V_{CC} - 0.6\text{V}$; $I_O = 0\text{A}$; $V_{CC} = 2.3\text{V}$ to 5.5V	-	-	500	μA	



3.3.3、AC Characteristics 1

($T_{amb}=-40^{\circ}\text{C}$ to $+85^{\circ}\text{C}$, voltages are referenced to GND (ground = 0V), unless otherwise specified.)

Parameter	Symbol	Conditions	Min.	Typ. ^[1]	Max.	Unit	
A to Y propagation delay	t_{PLH}, t_{PHL}	see Figure 4	$V_{CC}=1.65\text{V}$ to 1.95V	-	4.9	13.4	ns
			$V_{CC}=2.3\text{V}$ to 2.7V	-	3.1	7.1	ns
			$V_{CC}=2.7\text{V}$	-	3.2	7.1	ns
			$V_{CC}=3.0\text{V}$ to 3.6V	-	3.1	5.7	ns
			$V_{CC}=4.5\text{V}$ to 5.5V	-	2.2	4.0	ns
$\overline{\text{MR}}$ to Q High to Low propagation delay	t_{PHL}	see Figure 5	$V_{CC}=1.65\text{V}$ to 1.95V	-	4.3	12.9	ns
			$V_{CC}=2.3\text{V}$ to 2.7V	-	2.8	7.0	ns
			$V_{CC}=2.7\text{V}$	-	3.0	7.0	ns
			$V_{CC}=3.0\text{V}$ to 3.6V	-	2.5	5.8	ns
			$V_{CC}=4.5\text{V}$ to 5.5V	-	2.0	4.1	ns
CP HIGH or LOW pulse width	t_w	see Figure 4	$V_{CC}=1.65\text{V}$ to 1.95V	6.2	-	-	ns
			$V_{CC}=2.3\text{V}$ to 2.7V	2.7	-	-	ns
			$V_{CC}=2.7\text{V}$	2.7	-	-	ns
			$V_{CC}=3.0\text{V}$ to 3.6V	2.7	1.3	-	ns
			$V_{CC}=4.5\text{V}$ to 5.5V	2.0	-	-	ns
$\overline{\text{MR}}$ LOW pulse width	t_w	see Figure 5	$V_{CC}=1.65\text{V}$ to 1.95V	6.2	-	-	ns
			$V_{CC}=2.3\text{V}$ to 2.7V	2.7	-	-	ns
			$V_{CC}=2.7\text{V}$	2.7	-	-	ns
			$V_{CC}=3.0\text{V}$ to 3.6V	2.7	1.6	-	ns
			$V_{CC}=4.5\text{V}$ to 5.5V	2.0	-	-	ns
$\overline{\text{MR}}$ to CP recovery time	t_{rec}	see Figure 5	$V_{CC}=1.65\text{V}$ to 1.95V	1.9	-	-	ns
			$V_{CC}=2.3\text{V}$ to 2.7V	1.4	-	-	ns
			$V_{CC}=2.7\text{V}$	1.3	-	-	ns
			$V_{CC}=3.0\text{V}$ to 3.6V	1.2	0.4	-	ns
			$V_{CC}=4.5\text{V}$ to 5.5V	1.0	-	-	ns
D to CP Set-up time	t_{su}	see Figure 4	$V_{CC}=1.65\text{V}$ to 1.95V	2.9	-	-	ns
			$V_{CC}=2.3\text{V}$ to 2.7V	1.7	-	-	ns
			$V_{CC}=2.7\text{V}$	1.7	-	-	ns
			$V_{CC}=3.0\text{V}$ to 3.6V	1.3	0.5	-	ns
			$V_{CC}=4.5\text{V}$ to 5.5V	1.1	-	-	ns
D to CP hold time	t_h	see Figure 4	$V_{CC}=1.65\text{V}$ to 1.95V	0.0	-	-	ns
			$V_{CC}=2.3\text{V}$ to 2.7V	0.3	-	-	ns
			$V_{CC}=2.7\text{V}$	0.5	-	-	ns
			$V_{CC}=3.0\text{V}$ to 3.6V	1.2	0.2	-	ns
			$V_{CC}=4.5\text{V}$ to 5.5V	0.5	-	-	ns
maximum frequency	f_{max}	see Figure 4	$V_{CC}=1.65\text{V}$ to 1.95V	80	-	-	MHZ
			$V_{CC}=2.3\text{V}$ to 2.7V	175	-	-	MHZ
			$V_{CC}=2.7\text{V}$	175	-	-	MHZ
			$V_{CC}=3.0\text{V}$ to 3.6V	175	-	-	MHZ
			$V_{CC}=4.5\text{V}$ to 5.5V	200	-	-	MHZ

Note: Typical values are measured at $T_{amb}=25^{\circ}\text{C}$ and $V_{CC}=1.8\text{V}, 2.5\text{V}, 2.7\text{V}, 3.3\text{V}$ and 5.0V respectively.



3.3.4、AC Characteristics 2

($T_{amb} = -40^{\circ}C$ to $+125^{\circ}C$, voltages are referenced to GND (ground = 0V), unless otherwise specified.)

Parameter	Symbol	Conditions	Min.	Typ. ^[1]	Max.	Unit	
A to Y propagation delay	t_{PLH}, t_{PHL}	see Figure 4	$V_{CC}=1.65V$ to $1.95V$	-	-	17	ns
			$V_{CC}=2.3V$ to $2.7V$	-	-	9.0	ns
			$V_{CC}=2.7V$	-	-	9.0	ns
			$V_{CC}=3.0V$ to $3.6V$	-	-	7.5	ns
			$V_{CC}=4.5V$ to $5.5V$	-	-	5.5	ns
\overline{MR} to Q propagation delay	t_{PHL}	see Figure 5	$V_{CC}=1.65V$ to $1.95V$	-	-	17	ns
			$V_{CC}=2.3V$ to $2.7V$	-	-	9.0	ns
			$V_{CC}=2.7V$	-	-	9.0	ns
			$V_{CC}=3.0V$ to $3.6V$	-	-	7.5	ns
			$V_{CC}=4.5V$ to $5.5V$	-	-	5.5	ns
CP HIGH or LOW pulse width	t_w	see Figure 4	$V_{CC}=1.65V$ to $1.95V$	6.8	-	-	ns
			$V_{CC}=2.3V$ to $2.7V$	2.9	-	-	ns
			$V_{CC}=2.7V$	2.9	-	-	ns
			$V_{CC}=3.0V$ to $3.6V$	2.9	-	-	ns
			$V_{CC}=4.5V$ to $5.5V$	2.2	-	-	ns
\overline{MR} LOW pulse width	t_w	see Figure 5	$V_{CC}=1.65V$ to $1.95V$	6.8	-	-	ns
			$V_{CC}=2.3V$ to $2.7V$	2.9	-	-	ns
			$V_{CC}=2.7V$	2.9	-	-	ns
			$V_{CC}=3.0V$ to $3.6V$	2.9	-	-	ns
			$V_{CC}=4.5V$ to $5.5V$	2.2	-	-	ns
\overline{MR} to CP recovery time	t_{rec}	see Figure 5	$V_{CC}=1.65V$ to $1.95V$	2.1	-	-	ns
			$V_{CC}=2.3V$ to $2.7V$	1.5	-	-	ns
			$V_{CC}=2.7V$	1.4	-	-	ns
			$V_{CC}=3.0V$ to $3.6V$	1.3	-	-	ns
			$V_{CC}=4.5V$ to $5.5V$	1.1	-	-	ns
D to CP Set-up time	t_{su}	see Figure 4	$V_{CC}=1.65V$ to $1.95V$	3.2	-	-	ns
			$V_{CC}=2.3V$ to $2.7V$	1.8	-	-	ns
			$V_{CC}=2.7V$	1.8	-	-	ns
			$V_{CC}=3.0V$ to $3.6V$	1.4	-	-	ns
			$V_{CC}=4.5V$ to $5.5V$	1.2	-	-	ns
D to CP hold time	t_h	see Figure 4	$V_{CC}=1.65V$ to $1.95V$	0.0	-	-	ns
			$V_{CC}=2.3V$ to $2.7V$	0.3	-	-	ns
			$V_{CC}=2.7V$	0.6	-	-	ns
			$V_{CC}=3.0V$ to $3.6V$	1.3	-	-	ns
			$V_{CC}=4.5V$ to $5.5V$	0.6	-	-	ns
maximum frequency	f_{max}	see Figure 4	$V_{CC}=1.65V$ to $1.95V$	72	-	-	MHZ
			$V_{CC}=2.3V$ to $2.7V$	159	-	-	MHZ
			$V_{CC}=2.7V$	159	-	-	MHZ
			$V_{CC}=3.0V$ to $3.6V$	159	-	-	MHZ
			$V_{CC}=4.5V$ to $5.5V$	182	-	-	MHZ



4、Testing Circuit

4.1、AC Testing Circuit

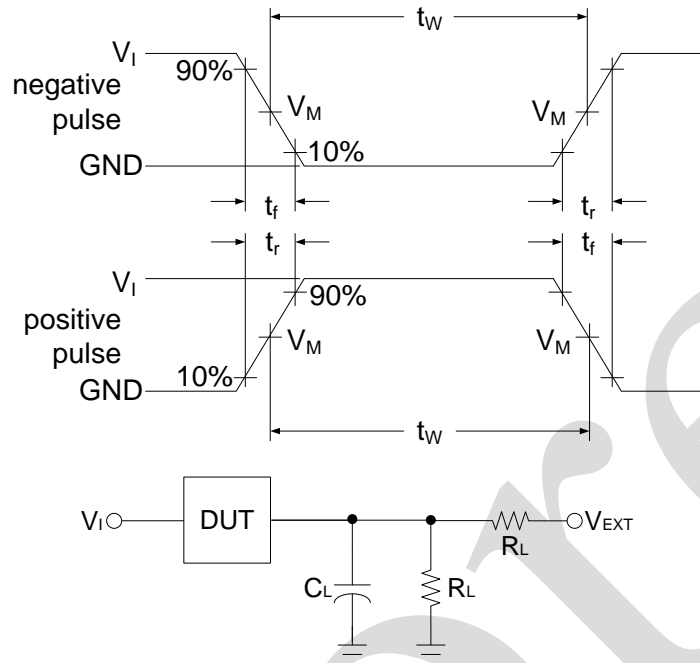


Figure 3. Load circuit

C_L includes probe and jig capacitance.

R_L =Load resistance.

4.2、Test Data

Supply voltage V_{CC}	Input V_I		Load		V_{EXT}		
	$t_r = t_f$	C_L	R_L	t_{PLH}/t_{PHL}	t_{PLZ}/t_{PZL}	t_{PHZ}/t_{PZH}	
1.65V to 1.95V	V_{CC}	$\leq 3ns$	30pF	1k Ω	Open	$2 \times V_{CC}$	GND
2.3V to 2.7V	V_{CC}	$\leq 3ns$	30pF	500 Ω	Open	$2 \times V_{CC}$	GND
2.7V	V_{CC}	$\leq 3ns$	50pF	500 Ω	Open	$2 \times V_{CC}$	GND
3.0V to 3.6V	V_{CC}	$\leq 3ns$	50pF	500 Ω	Open	$2 \times V_{CC}$	GND
4.5V to 5.5V	V_{CC}	$\leq 3ns$	50pF	500 Ω	Open	$2 \times V_{CC}$	GND



4.3、AC Testing Waveforms

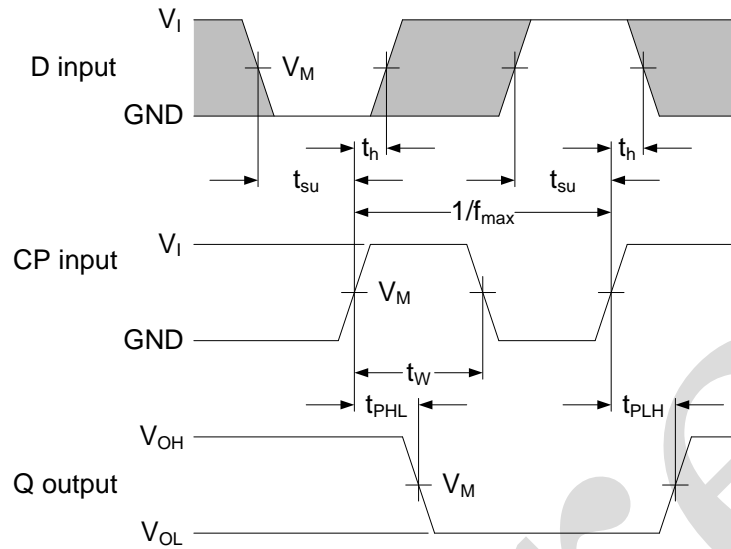


Figure 4. The clock input (CP) to output (Q) propagation delays, the clock pulse width, the D to CP set-up, the CP to D hold times, and the maximum clock pulse frequency

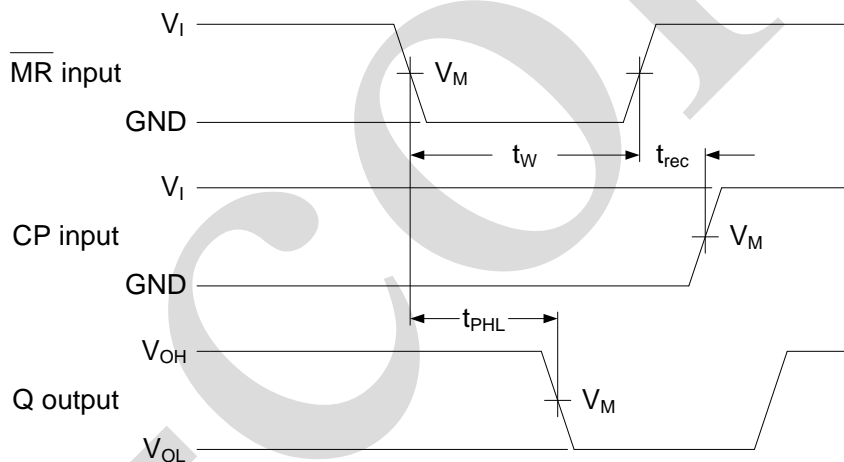


Figure 5. The master reset (\overline{MR}) input to output (Q) propagation delays, the master reset pulse width, and the \overline{MR} to CP recovery time

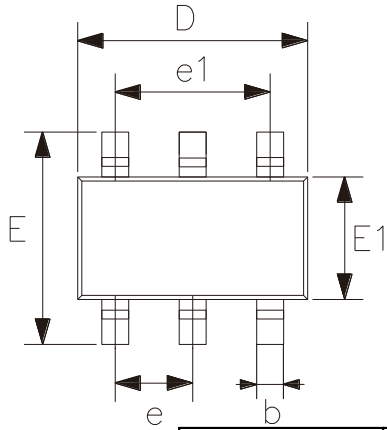
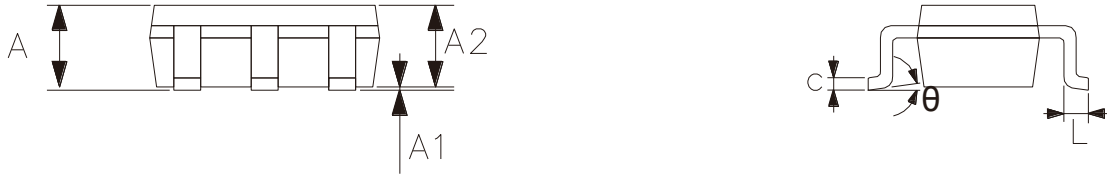
4.4、Measurement Points

Supply voltage	Input	Output
V_{CC}	V_M	V_M
1.65V to 1.95V	$0.5 \times V_{CC}$	$0.5 \times V_{CC}$
2.3V to 2.7V	$0.5 \times V_{CC}$	$0.5 \times V_{CC}$
2.7V	$0.5 \times V_{CC}$	$0.5 \times V_{CC}$
3.0V to 3.6V	$0.5 \times V_{CC}$	$0.5 \times V_{CC}$
4.5V to 5.5V	$0.5 \times V_{CC}$	$0.5 \times V_{CC}$



5、Package Information

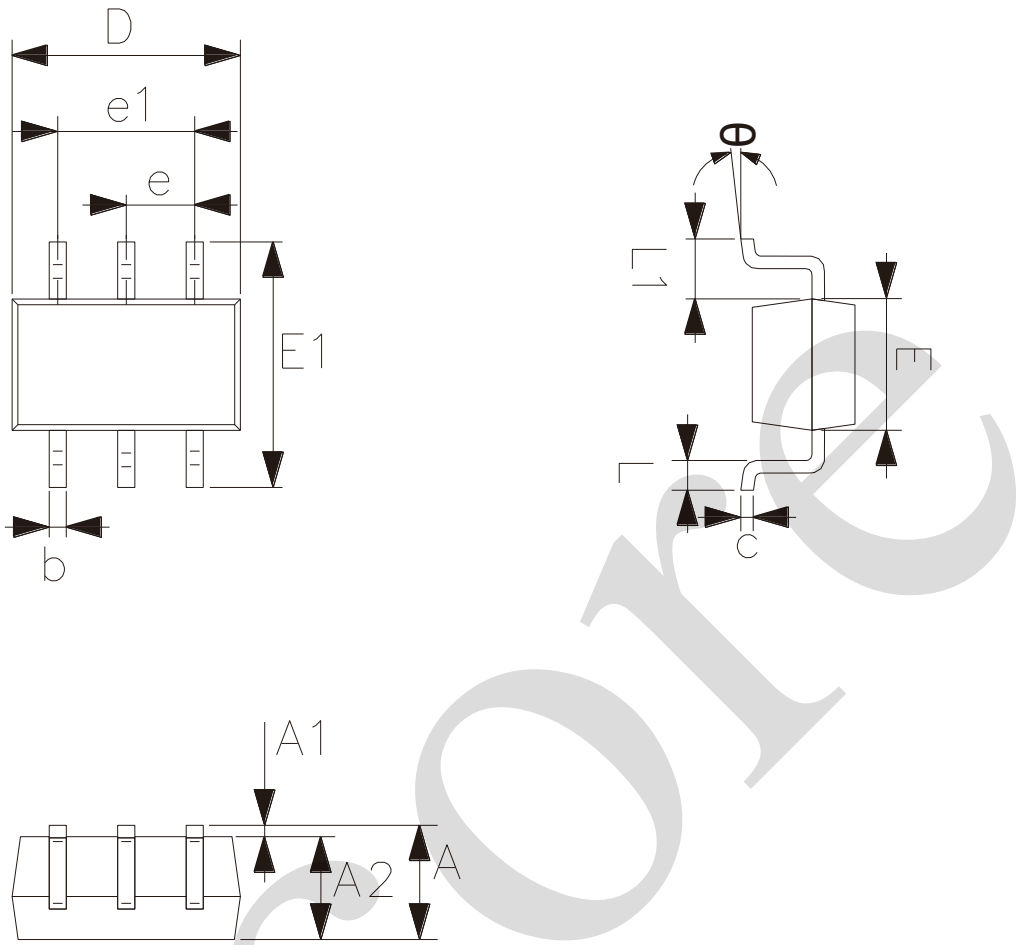
5.1、SOT23-6



2023/12/A Symbol	Dimensions In Millimeters	
	Min.	Max.
A	—	1.25
A1	0.00	0.12
A2	1.00	1.20
b	0.30	0.50
c	0.10	0.20
D	2.82	3.02
E	2.60	3.00
E1	1.50	1.70
e	0.95	
e1	1.80	2.00
L	0.30	0.60
θ	0°	8°



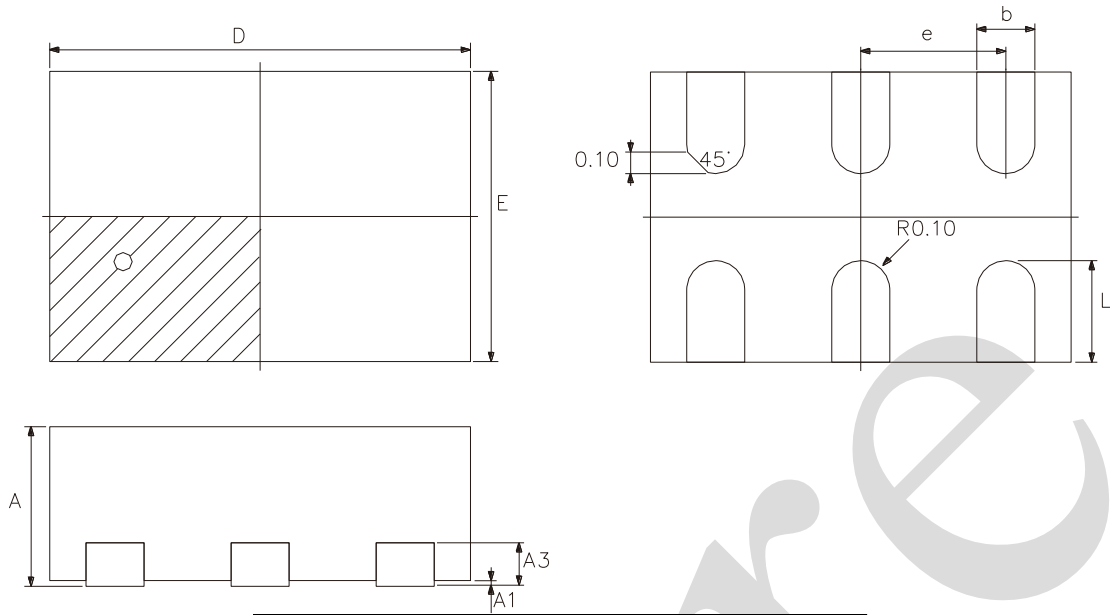
5.2、SOT363



2023/12/A	Dimensions In Millimeters	
Symbol	Min.	Max.
A	0.90	1.10
A1	0.00	0.10
A2	0.90	1.00
b	0.15	0.35
c	0.11	0.175
D	2.00	2.20
E1	2.15	2.45
E	1.15	1.35
e	0.65	
e1	1.20	1.40
L	0.26	0.46
L1	0.525	
θ	0°	8°



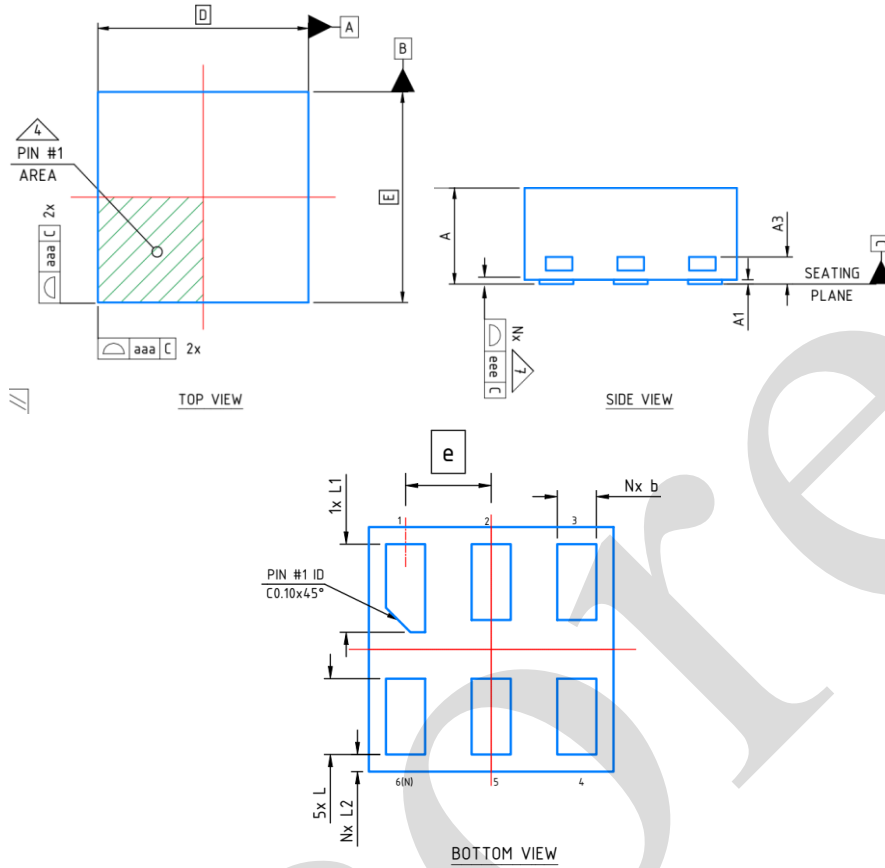
5.3、XSON6(1*1.45*0.55)-0.5



2023/12/A	Dimensions In Millimeters	
Symbol	Min	Max
A	0.51	0.60
A1	0.00	0.05
A3	0.15	
b	0.15	0.25
D	1.45	
E	1.00	
e	0.50	
L	0.25	0.45



5.4. XSON6(1*1*0.45)-0.35



2025/03/B	Dimensions In Millimeters	
Symbol	Min	Max
A	0.32	0.50
A1	0	0.05
A3	0.1-0.13 REF	
b	0.10	0.21
D	1.00	
E	1.00	
e	0.35	
L	0.25	0.36
L1	0.30	0.41
L2	0.02	0.12



6、 Statements And Notes

6.1、 The name and content of Hazardous substances or Elements in the product

Part name	Hazardous substances or Elements									
	Lead and lead compounds	Mercury and mercury compounds	Cadmium and cadmium compounds	Hexavalent chromium compounds	Polybrominated biphenyls	Polybrominated biphenyl ethers	Dibutyl phthalate	Butylbenzyl phthalate	Di-2-ethylhexyl phthalate	Diisobutyl phthalate
Lead frame	○	○	○	○	○	○	○	○	○	○
Plastic resin	○	○	○	○	○	○	○	○	○	○
Chip	○	○	○	○	○	○	○	○	○	○
The lead	○	○	○	○	○	○	○	○	○	○
Plastic sheet installed	○	○	○	○	○	○	○	○	○	○
explanation	○: Indicates that the content of hazardous substances or elements in the detection limit of the following the SJ/T11363-2006 standard. ×: Indicates that the content of hazardous substances or elements exceeding the SJ/T11363-2006 Standard limit requirements.									

6.2、 Notes

We recommend you to read this chapter carefully before using this product.

The information in this chapter is provided for reference only and i-Core disclaims any express or implied warranties, including but not limited to applicability, special application or non-infringement of third party rights.

This product is not suitable for critical equipment such as life-saving, life-sustaining or safety equipment. It is also not suitable for applications that may result in personal injury, death, or serious property or environmental damage due to product malfunction or failure. I-Core will not be liable for any damages incurred by the customers at their own risk for such applications.

The customer is responsible for conducting all necessary tests i-Core's application to avoid failure in the application or the application of the customer's third party users. I-Core does not accept any liability.

The Company reserves the right to change or improve the information published in this chapter at any time. The information in this chapter are subject to change without notice. We recommend the customer to consult our sales staff before purchasing.

Please obtain related materials form i-Core's regular channels and we are not responsible for its content if it is provided by sources other than our company.

In case of any conflict between the Chinese and English version, the version is subject to the Chinese one.