



AiP74LVC2G126

Dual Buffer/Line Driver; 3-state

Product Specification

Specification Revision History:

| Version | Date | Description |
|----------------|-------------|---------------------|
| 2017-05-A1 | 2017-05 | New |
| 2023-04-B1 | 2023-04 | Update the template |
| | | |
| | | |



Contents

| | |
|---|-----------|
| 1、 General Description..... | 3 |
| 2、 Block Diagram And Pin Description | 4 |
| 2.1、 Block Diagram | 4 |
| 2.2、 Pin Configurations..... | 4 |
| 2.3、 Pin Description | 4 |
| 2.4、 Function Table..... | 5 |
| 3、 Electrical Parameter | 5 |
| 3.1、 Absolute Maximum Ratings..... | 5 |
| 3.2、 Recommended Operating Conditions | 5 |
| 3.3、 Electrical Characteristics | 6 |
| 3.3.1、 DC Characteristics 1 | 6 |
| 3.3.2、 DC Characteristics 2 | 7 |
| 3.3.3、 AC Characteristics 1 | 8 |
| 3.3.4、 AC Characteristics 2 | 8 |
| 4、 Testing Circuit | 9 |
| 4.1、 AC Testing Circuit | 9 |
| 4.2、 AC Testing Waveforms..... | 9 |
| 4.3、 Measurement Points | 10 |
| 4.4、 Test Data | 10 |
| 5、 Package Information | 11 |
| 5.1、 TSSOP8..... | 11 |
| 5.2、 VSSOP8 | 12 |
| 6、 Statements And Notes | 13 |
| 6.1、 The name and content of Hazardous substances or Elements in the product..... | 13 |
| 6.2、 Notes | 13 |



1、 General Description

The AiP74LVC2G126 is a dual non-inverting buffer/line driver with 3-state outputs. Each 3-state output is controlled by an output enable input (pin nOE). A LOW-level at pin nOE causes the output to assume a high-impedance OFF-state.

Inputs can be driven from either 3.3V or 5V devices. This feature allows the use of the AiP74LVC2G126 as a translator in a mixed 3.3V and 5V environment.

Features:

- Wide supply voltage range from 1.65V to 5.5V
- 5V tolerant input/output for interfacing with 5V logic
- $\pm 24\text{mA}$ output drive ($V_{CC}=3.0\text{V}$)
- CMOS low power consumption
- Specified from -40°C to $+125^{\circ}\text{C}$
- Packaging information: TSSOP8/VSSOP8

Ordering Information:

Tube packing specifications:

| Part number | Packaging form | Marking code | Tube quantity | Boxed tube quantity | Boxed quantity | Notes |
|---------------------|----------------|--------------|-----------------|---------------------|------------------|---|
| AiP74LVC2G126TA8.TB | TSSOP8 | BSXX | 100 PCS/tube | 200 tube/box | 20000 PCS/box | Dimensions of plastic enclosure: 3.0mm×3.0mm Pin spacing: 0.65mm |

Reel packing specifications:

| Part number | Packaging form | Marking code | Reel quantity | Boxed reel quantity | Notes |
|---------------------|----------------|--------------|------------------|---------------------|--|
| AiP74LVC2G126TA8.TR | TSSOP8 | BSXX | 3000 PCS/reel | 3000 PCS/box | Dimensions of plastic enclosure: 3.0mm×3.0mm Pin spacing: 0.65mm |
| AiP74LVC2G126YA8.TR | VSSOP8 | BSXX | 3000 PCS/reel | 3000 PCS/box | Dimensions of plastic enclosure: 2.0mm×2.3mm Pin spacing:0.50mm |

Note 1: “XX” refers to variable content, meaning year and package batch serial number.

Note 2: If the physical information is inconsistent with the ordering information, please refer to the actual product.



2、Block Diagram And Pin Description

2.1、Block Diagram

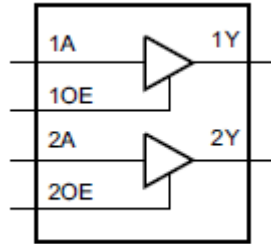


Figure 1. Logic symbol

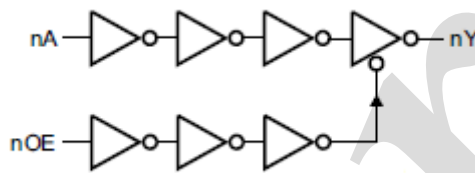
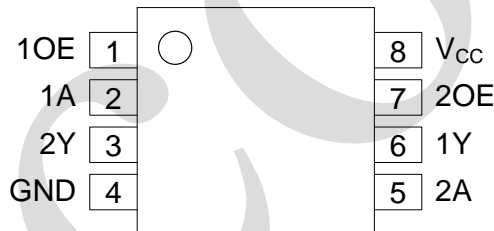


Figure 2. Logic diagram (one gate)

2.2、Pin Configurations



2.3、Pin Description

| Pin No. | Pin Name | Description |
|---------|-----------------|-----------------------------------|
| 1 | 1OE | output enable input (active HIGH) |
| 2 | 1A | data input |
| 3 | 2Y | data output |
| 4 | GND | ground (0V) |
| 5 | 2A | data input |
| 6 | 1Y | data output |
| 7 | 2OE | output enable input (active HIGH) |
| 8 | V _{CC} | supply voltage |



2.4、Function Table

| Input | | Output |
|-------|----|--------|
| nOE | nA | nY |
| H | L | L |
| H | H | H |
| L | X | Z |

Note: H=HIGH voltage level; L=LOW voltage level; X=don't care; Z=high-impedance OFF-state.

3、Electrical Parameter

3.1、Absolute Maximum Ratings

(Voltages are referenced to GND(ground=0V), unless otherwise specified.)

| Parameter | Symbol | Conditions | Min. | Max. | Unit |
|-------------------------|-----------|------------------------------|------|--------------|------|
| supply voltage | V_{CC} | - | -0.5 | +6.5 | V |
| input clamping current | I_{IK} | $V_I < 0V$ | -50 | - | mA |
| input voltage | V_I | - | -0.5 | +6.5 | V |
| Output clamping current | I_{OK} | $V_O > V_{CC}$ or $V_O < 0V$ | - | ± 50 | mA |
| output voltage | V_O | Active mode | -0.5 | $V_{CC}+0.5$ | V |
| | | Power-down mode | -0.5 | +6.5 | V |
| output current | I_O | $V_O=0V$ to V_{CC} | - | ± 50 | mA |
| supply current | I_{CC} | - | - | 100 | mA |
| ground current | I_{GND} | - | -100 | - | mA |
| storage temperature | T_{stg} | - | -65 | +150 | °C |
| total power dissipation | P_{tot} | - | - | 300 | mW |
| Soldering temperature | T_L | 10s | 260 | | °C |

Note: When $V_{CC}=0V$ (Power-down mode), the output voltage can be 5.5V in normal operation.

3.2、Recommended Operating Conditions

| Parameter | Symbol | Conditions | Min. | Typ. | Max. | Unit |
|---------------------|-----------|-------------------------------|------|------|----------|------|
| supply voltage | V_{CC} | - | 1.65 | - | 5.5 | V |
| input voltage | V_I | - | 0 | - | 5.5 | V |
| output voltage | V_O | Active mode | 0 | - | V_{CC} | V |
| | | $V_{CC}=0V$; Power-down mode | 0 | - | 5.5 | V |
| ambient temperature | T_{amb} | - | -40 | - | +125 | °C |



3.3、Electrical Characteristics

3.3.1、DC Characteristics 1

($T_{amb} = -40^{\circ}\text{C}$ to $+85^{\circ}\text{C}$, voltages are referenced to GND (ground=0V), unless otherwise specified.)

| Parameter | Symbol | Conditions | Min. | Typ. | Max. | Unit | |
|---------------------------|-----------------|---|---|----------------|----------------------|---------------|---|
| HIGH-level input voltage | V_{IH} | $V_{CC}=1.65\text{V}$ to 1.95V | $0.65 \times V_{CC}$ | - | - | V | |
| | | $V_{CC}=2.3\text{V}$ to 2.7V | 1.7 | - | - | V | |
| | | $V_{CC}=2.7\text{V}$ to 3.6V | 2.0 | - | - | V | |
| | | $V_{CC}=4.5\text{V}$ to 5.5V | $0.7 \times V_{CC}$ | - | - | V | |
| LOW-level input voltage | V_{IL} | $V_{CC}=1.65\text{V}$ to 1.95V | - | - | $0.35 \times V_{CC}$ | V | |
| | | $V_{CC}=2.3\text{V}$ to 2.7V | - | - | 0.7 | V | |
| | | $V_{CC}=2.7\text{V}$ to 3.6V | - | - | 0.8 | V | |
| | | $V_{CC}=4.5\text{V}$ to 5.5V | - | - | $0.3 \times V_{CC}$ | V | |
| HIGH-level output voltage | V_{OH} | $V_I = V_{IH}$ or V_{IL} | $I_O = -100\mu\text{A}; V_{CC}=1.65\text{V}$ to 5.5V | $V_{CC} - 0.1$ | - | - | V |
| | | | $I_O = -4\text{mA}; V_{CC}=1.65\text{V}$ | 1.2 | - | - | V |
| | | | $I_O = -8\text{mA}; V_{CC}=2.3\text{V}$ | 1.9 | - | - | V |
| | | | $I_O = -12\text{mA}; V_{CC}=2.7\text{V}$ | 2.2 | - | - | V |
| | | | $I_O = -24\text{mA}; V_{CC}=3.0\text{V}$ | 2.3 | - | - | V |
| | | | $I_O = -32\text{mA}; V_{CC}=4.5\text{V}$ | 3.8 | - | - | V |
| LOW-level output voltage | V_{OL} | $V_I = V_{IH}$ or V_{IL} | $I_O = 100\mu\text{A}; V_{CC}=1.65\text{V}$ to 5.5V | - | - | 0.10 | V |
| | | | $I_O = 4\text{mA}; V_{CC}=1.65\text{V}$ | - | - | 0.45 | V |
| | | | $I_O = 8\text{mA}; V_{CC}=2.3\text{V}$ | - | - | 0.30 | V |
| | | | $I_O = 12\text{mA}; V_{CC}=2.7\text{V}$ | - | - | 0.40 | V |
| | | | $I_O = 24\text{mA}; V_{CC}=3.0\text{V}$ | - | - | 0.55 | V |
| | | | $I_O = 32\text{mA}; V_{CC}=4.5\text{V}$ | - | - | 0.55 | V |
| input leakage current | I_I | $V_I = 5.5\text{V}$ or GND; $V_{CC} = 0\text{V}$ to 5.5V | - | - | ± 1 | μA | |
| OFF-state output current | I_{OZ} | $V_I = V_{IH}$ or $V_{IL}; V_O = 5.5\text{V}$ or GND; $V_{CC} = 3.6\text{V}$ | - | - | ± 2 | μA | |
| power-off leakage current | I_{OFF} | V_I or $V_O = 5.5\text{V}; V_{CC} = 0\text{V}$ | - | - | ± 2 | μA | |
| supply current | I_{CC} | $V_I = 5.5\text{V}$ or GND; $V_{CC} = 1.65\text{V}$ to $5.5\text{V}; I_O = 0\text{A}$ | - | - | 4 | μA | |
| additional supply current | ΔI_{CC} | per pin; $V_I = V_{CC} - 0.6\text{V}; I_O = 0\text{A}; V_{CC} = 2.3\text{V}$ to 5.5V | - | - | 500 | μA | |
| input capacitance | C_I | - | - | 2 | - | pF | |

Note: All typical values are measured at $V_{CC} = 3.3\text{V}$ and $T_{amb} = 25^{\circ}\text{C}$.



3.3.2、DC Characteristics 2

($T_{amb} = -40^{\circ}\text{C}$ to $+125^{\circ}\text{C}$, voltages are referenced to GND (ground=0V), unless otherwise specified.)

| Parameter | Symbol | Conditions | Min. | Typ. | Max. | Unit | |
|---------------------------|-----------------|---|---|----------------|----------------------|---------------|---|
| HIGH-level input voltage | V_{IH} | $V_{CC}=1.65\text{V to }1.95\text{V}$ | $0.65 \times V_{CC}$ | - | - | V | |
| | | $V_{CC}=2.3\text{V to }2.7\text{V}$ | 1.7 | - | - | V | |
| | | $V_{CC}=2.7\text{V to }3.6\text{V}$ | 2.0 | - | - | V | |
| | | $V_{CC}=4.5\text{V to }5.5\text{V}$ | $0.7 \times V_{CC}$ | - | - | V | |
| LOW-level input voltage | V_{IL} | $V_{CC}=1.65\text{V to }1.95\text{V}$ | - | - | $0.35 \times V_{CC}$ | V | |
| | | $V_{CC}=2.3\text{V to }2.7\text{V}$ | - | - | 0.7 | V | |
| | | $V_{CC}=2.7\text{V to }3.6\text{V}$ | - | - | 0.8 | V | |
| | | $V_{CC}=4.5\text{V to }5.5\text{V}$ | - | - | $0.3 \times V_{CC}$ | V | |
| HIGH-level output voltage | V_{OH} | $V_I = V_{IH} \text{ or } V_{IL}$ | $I_O = -100\mu\text{A}; V_{CC} = 1.65\text{V to }5.5\text{V}$ | $V_{CC} - 0.1$ | - | - | V |
| | | | $I_O = -4\text{mA}; V_{CC} = 1.65\text{V}$ | 0.95 | - | - | V |
| | | | $I_O = -8\text{mA}; V_{CC} = 2.3\text{V}$ | 1.7 | - | - | V |
| | | | $I_O = -12\text{mA}; V_{CC} = 2.7\text{V}$ | 1.9 | - | - | V |
| | | | $I_O = -24\text{mA}; V_{CC} = 3.0\text{V}$ | 2.0 | - | - | V |
| | | | $I_O = -32\text{mA}; V_{CC} = 4.5\text{V}$ | 3.4 | - | - | V |
| LOW-level output voltage | V_{OL} | $V_I = V_{IH} \text{ or } V_{IL}$ | $I_O = 100\mu\text{A}; V_{CC} = 1.65\text{V to }5.5\text{V}$ | - | - | 0.10 | V |
| | | | $I_O = 4\text{mA}; V_{CC} = 1.65\text{V}$ | - | - | 0.70 | V |
| | | | $I_O = 8\text{mA}; V_{CC} = 2.3\text{V}$ | - | - | 0.45 | V |
| | | | $I_O = 12\text{mA}; V_{CC} = 2.7\text{V}$ | - | - | 0.60 | V |
| | | | $I_O = 24\text{mA}; V_{CC} = 3.0\text{V}$ | - | - | 0.80 | V |
| | | | $I_O = 32\text{mA}; V_{CC} = 4.5\text{V}$ | - | - | 0.80 | V |
| input leakage current | I_I | $V_I = 5.5\text{V or GND}; V_{CC} = 0\text{V to }5.5\text{V}$ | - | - | ± 1 | μA | |
| OFF-state output current | I_{OZ} | $V_I = V_{IH} \text{ or } V_{IL}; V_O = 5.5\text{V or GND}; V_{CC} = 3.6\text{V}$ | - | - | ± 2 | μA | |
| power-off leakage current | I_{OFF} | $V_I \text{ or } V_O = 5.5\text{V}; V_{CC} = 0\text{V}$ | - | - | ± 2 | μA | |
| supply current | I_{CC} | $V_I = 5.5\text{V or GND}; V_{CC} = 1.65\text{V to }5.5\text{V}; I_O = 0\text{A}$ | - | - | 4 | μA | |
| additional supply current | ΔI_{CC} | per pin; $V_I = V_{CC} - 0.6\text{V}; I_O = 0\text{A}; V_{CC} = 2.3\text{V to }5.5\text{V}$ | - | - | 500 | μA | |



3.3.3、AC Characteristics 1

($T_{amb}=-40^{\circ}\text{C}$ to $+85^{\circ}\text{C}$, voltages are referenced to GND (ground=0V), unless otherwise specified.)

| Parameter | Symbol | Conditions | Min. | Typ. ^[1] | Max. | Unit | |
|----------------------------|--------------------|--------------|---|---------------------|------|------|----|
| nA to nY propagation delay | t_{PLH}, t_{PHL} | see Figure 4 | $V_{CC}=1.65\text{V}$ to 1.95V | - | 11.7 | 17.6 | ns |
| | | | $V_{CC}=2.3\text{V}$ to 2.7V | - | 7.8 | 11.7 | ns |
| | | | $V_{CC}=2.7\text{V}$ | - | 8.4 | 12.6 | ns |
| | | | $V_{CC}=3.0\text{V}$ to 3.6V | - | 7.2 | 10.8 | ns |
| | | | $V_{CC}=4.5\text{V}$ to 5.5V | - | 5.7 | 8.6 | ns |
| nOE to nY enable time | t_{PZH}, t_{PZL} | see Figure 5 | $V_{CC}=1.65\text{V}$ to 1.95V | - | 12.3 | 18.5 | ns |
| | | | $V_{CC}=2.3\text{V}$ to 2.7V | - | 7.8 | 11.7 | ns |
| | | | $V_{CC}=2.7\text{V}$ | - | 8.4 | 12.6 | ns |
| | | | $V_{CC}=3.0\text{V}$ to 3.6V | - | 7.2 | 10.8 | ns |
| | | | $V_{CC}=4.5\text{V}$ to 5.5V | - | 5.4 | 8.1 | ns |
| nOE to nY disable time | t_{PLZ}, t_{PHZ} | see Figure 5 | $V_{CC}=1.65\text{V}$ to 1.95V | - | 9.9 | 14.9 | ns |
| | | | $V_{CC}=2.3\text{V}$ to 2.7V | - | 5.7 | 8.6 | ns |
| | | | $V_{CC}=2.7\text{V}$ | - | 9 | 13.5 | ns |
| | | | $V_{CC}=3.0\text{V}$ to 3.6V | - | 7.5 | 11.3 | ns |
| | | | $V_{CC}=4.5\text{V}$ to 5.5V | - | 5.4 | 8.1 | ns |

Note:

[1] Typical values are measured at $T_{amb}=25^{\circ}\text{C}$ and $V_{CC}=1.8\text{V}, 2.5\text{V}, 2.7\text{V}, 3.3\text{V}$ and 5.0V respectively.

3.3.4、AC Characteristics 2

($T_{amb}=-40^{\circ}\text{C}$ to $+125^{\circ}\text{C}$, voltages are referenced to GND (ground=0V), unless otherwise specified.)

| Parameter | Symbol | Conditions | Min. | Typ. | Max. | Unit | |
|----------------------------|-----------|--------------|---|------|------|------|----|
| nA to nY propagation delay | t_{pd} | see Figure 4 | $V_{CC}=1.65\text{V}$ to 1.95V | - | - | 22.0 | ns |
| | | | $V_{CC}=2.3\text{V}$ to 2.7V | - | - | 15.0 | ns |
| | | | $V_{CC}=2.7\text{V}$ | - | - | 15.8 | ns |
| | | | $V_{CC}=3.0\text{V}$ to 3.6V | - | - | 13.6 | ns |
| | | | $V_{CC}=4.5\text{V}$ to 5.5V | - | - | 10.7 | ns |
| nOE to nY enable time | t_{en} | see Figure 5 | $V_{CC}=1.65\text{V}$ to 1.95V | - | - | 23.1 | ns |
| | | | $V_{CC}=2.3\text{V}$ to 2.7V | - | - | 14.7 | ns |
| | | | $V_{CC}=2.7\text{V}$ | - | - | 15.8 | ns |
| | | | $V_{CC}=3.0\text{V}$ to 3.6V | - | - | 13.4 | ns |
| | | | $V_{CC}=4.5\text{V}$ to 5.5V | - | - | 10.2 | ns |
| nOE to nY disable time | t_{dis} | see Figure 5 | $V_{CC}=1.65\text{V}$ to 1.95V | - | - | 18.2 | ns |
| | | | $V_{CC}=2.3\text{V}$ to 2.7V | - | - | 11.3 | ns |
| | | | $V_{CC}=2.7\text{V}$ | - | - | 17.4 | ns |
| | | | $V_{CC}=3.0\text{V}$ to 3.6V | - | - | 14.6 | ns |
| | | | $V_{CC}=4.5\text{V}$ to 5.5V | - | - | 10.8 | ns |



4、Testing Circuit

4.1、AC Testing Circuit

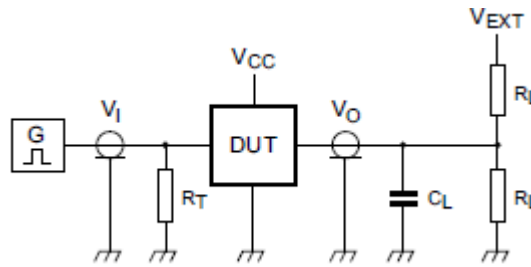


Figure 3. Test circuit for measuring switching times

Definitions for test circuit:

R_L =Load resistance.

C_L =Load capacitance including jig and probe capacitance.

R_T =Termination resistance; should be equal to the output impedance Z_o of the pulse generator.

V_{EXT} =External voltage for measuring switching times.

4.2、AC Testing Waveforms

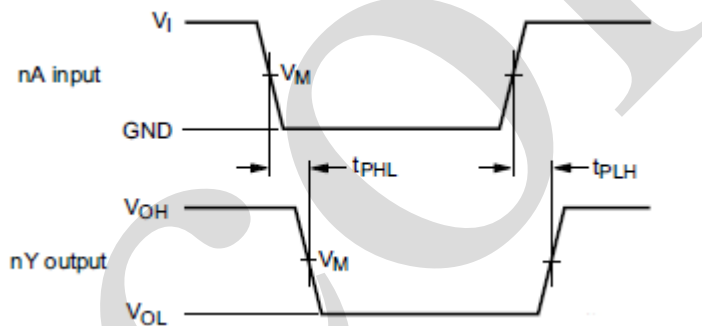


Figure 4. The input (nA) to output (nY) propagation delays

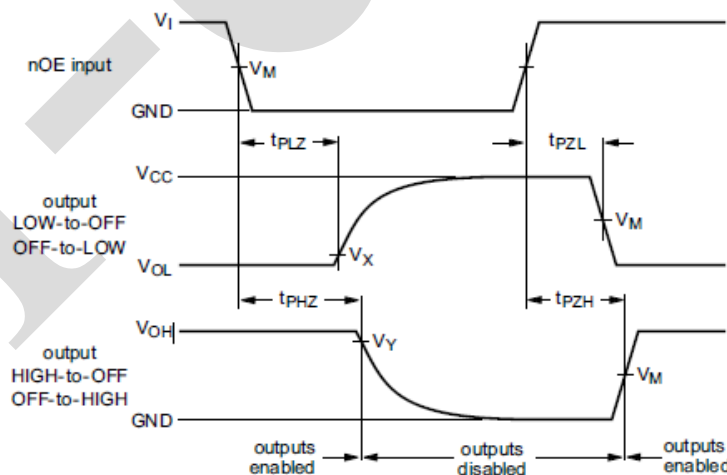


Figure 5. 3-state enable and disable times



4.3、Measurement Points

| Supply voltage | Input | Output | | |
|----------------|---------------------|---------------------|----------------|----------------|
| V_{CC} | V_M | V_M | V_X | V_Y |
| 1.65V to 1.95V | $0.5 \times V_{CC}$ | $0.5 \times V_{CC}$ | $V_{OL}+0.15V$ | $V_{OH}-0.15V$ |
| 2.3V to 2.7V | $0.5 \times V_{CC}$ | $0.5 \times V_{CC}$ | $V_{OL}+0.15V$ | $V_{OH}-0.15V$ |
| 2.7V | 1.5V | 1.5V | $V_{OL}+0.3V$ | $V_{OH}-0.3V$ |
| 3.0V to 3.6V | 1.5V | 1.5V | $V_{OL}+0.3V$ | $V_{OH}-0.3V$ |
| 4.5V to 5.5V | $0.5 \times V_{CC}$ | $0.5 \times V_{CC}$ | $V_{OL}+0.3V$ | $V_{OH}-0.3V$ |

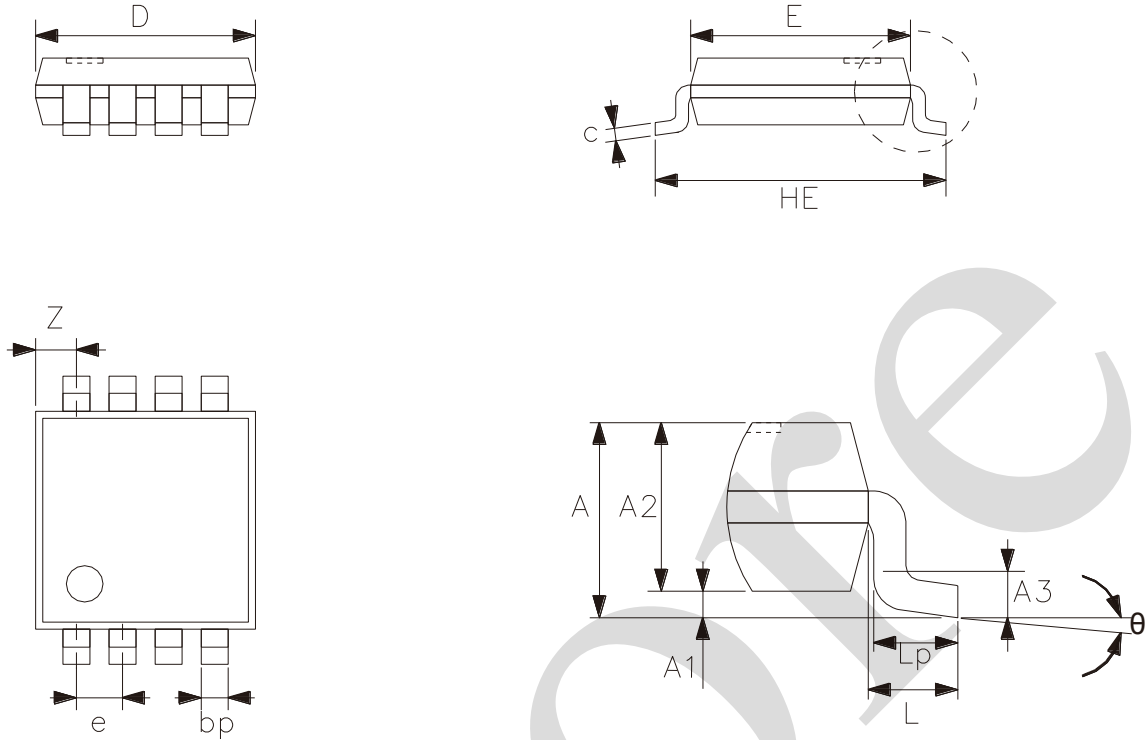
4.4、Test Data

| Supply voltage | Input | | Load | | V_{EXT} | | |
|----------------|----------|-------------|-------|--------------|--------------------|--------------------|--------------------|
| V_{CC} | V_I | $t_r = t_f$ | C_L | R_L | t_{PLH}, t_{PHL} | t_{PZH}, t_{PHZ} | t_{PZL}, t_{PLZ} |
| 1.65V to 1.95V | V_{CC} | $\leq 3ns$ | 30pF | 1k Ω | open | GND | $2 \times V_{CC}$ |
| 2.3V to 2.7V | V_{CC} | $\leq 3ns$ | 30pF | 500 Ω | open | GND | $2 \times V_{CC}$ |
| 2.7V | 2.7V | $\leq 3ns$ | 50pF | 500 Ω | open | GND | 6V |
| 3.0V to 3.6V | 2.7V | $\leq 3ns$ | 50pF | 500 Ω | open | GND | 6V |
| 4.5V to 5.5V | V_{CC} | $\leq 3ns$ | 50pF | 500 Ω | open | GND | $2 \times V_{CC}$ |



5、Package Information

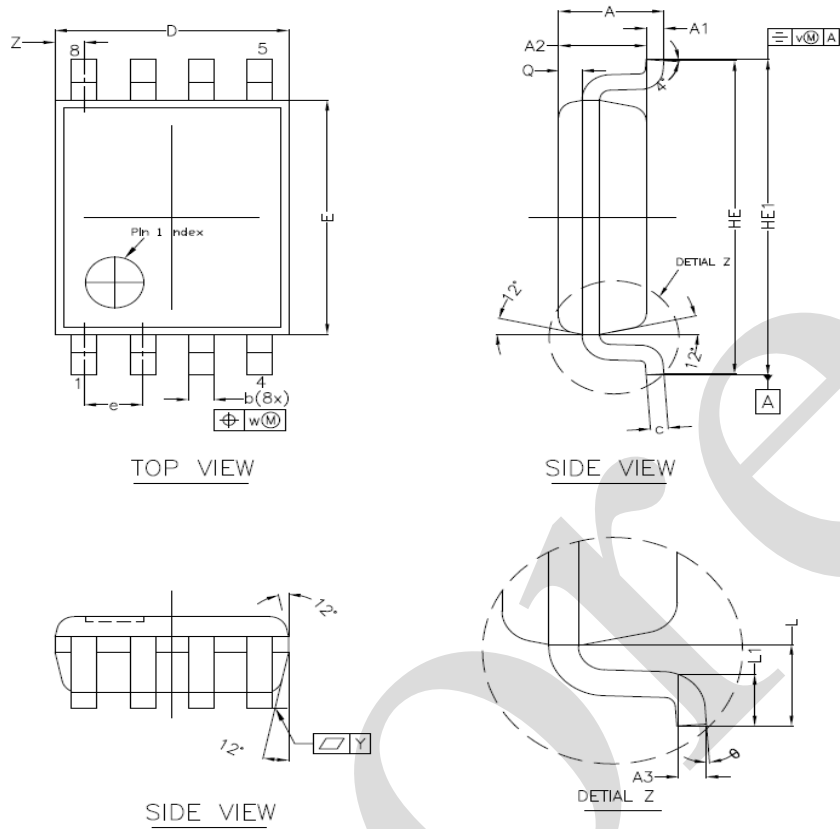
5.1、TSSOP8



| Symbol | Dimensions (mm) | |
|--------|-----------------|------|
| | Min. | Max. |
| A | - | 1.10 |
| A1 | 0 | 0.15 |
| A2 | 0.75 | 0.95 |
| A3 | 0.25 | |
| bp | 0.22 | 0.38 |
| c | 0.08 | 0.18 |
| D | 2.90 | 3.10 |
| E | 2.90 | 3.10 |
| HE | 3.90 | 4.10 |
| L | 0.50 | |
| Lp | 0.33 | 0.47 |
| e | 0.65 | |
| Z | 0.35 | 0.70 |
| θ | 0° | 8° |



5.2、VSSOP8



| Symbol | Dimensions (mm) | |
|--------|-----------------|------|
| | Min. | Max. |
| A | - | 1.00 |
| A1 | 0.00 | 0.15 |
| A2 | 0.60 | 0.85 |
| A3 | 0.12 | |
| Q | 0.19 | 0.21 |
| b | 0.17 | 0.27 |
| c | 0.08 | 0.23 |
| D | 1.90 | 2.10 |
| E | 2.20 | 2.40 |
| HE | 3.00 | 3.20 |
| HE1 | 3.00 | 3.40 |
| e | 0.50 | |
| L | 0.40 | |
| L1 | 0.15 | 0.40 |
| Y | 0.10 | |
| Z | 0.10 | 0.40 |
| θ | 0° | 8° |



6、 Statements And Notes

6.1、 The name and content of Hazardous substances or Elements in the product

| Part name | Hazardous substances or Elements | | | | | | | | | |
|-------------------------|---|-------------------------------|-------------------------------|-------------------------------|--------------------------|--------------------------------|-------------------|-----------------------|---------------------------|----------------------|
| | Lead and lead compounds | Mercury and mercury compounds | Cadmium and cadmium compounds | Hexavalent chromium compounds | Polybrominated biphenyls | Polybrominated biphenyl ethers | Dibutyl phthalate | Butylbenzyl phthalate | Di-2-ethylhexyl phthalate | Diisobutyl phthalate |
| Lead frame | ○ | ○ | ○ | ○ | ○ | ○ | ○ | ○ | ○ | ○ |
| Plastic resin | ○ | ○ | ○ | ○ | ○ | ○ | ○ | ○ | ○ | ○ |
| Chip | ○ | ○ | ○ | ○ | ○ | ○ | ○ | ○ | ○ | ○ |
| The lead | ○ | ○ | ○ | ○ | ○ | ○ | ○ | ○ | ○ | ○ |
| Plastic sheet installed | ○ | ○ | ○ | ○ | ○ | ○ | ○ | ○ | ○ | ○ |
| explanation | ○: Indicates that the content of hazardous substances or elements in the detection limit of the following the SJ/T11363-2006 standard. ×: Indicates that the content of hazardous substances or elements exceeding the SJ/T11363-2006 Standard limit requirements. | | | | | | | | | |

6.2、 Notes

We Recommend you to read this chapter carefully before using this product.

The information in this chapter is provided for reference only and i-Core disclaims any express or implied warranties, including but not limited to applicability, special application or non-infringement of third party rights.

This product is not suitable for critical equipment such as life-saving, life-sustaining or safety equipment. It is also not suitable for applications that may result in personal injury, death, or serious property or environmental damage due to product malfunction or failure. I-Core will not be liable for any damages incurred by the customers at their own risk for such applications.

The customer is responsible for conducting all necessary tests i-Core's application to avoid failure in the application or the application of the customer's third party users. I-Core does not accept any liability.

The Company reserves the right to change or improve the information published in this chapter at any time. The information in this chapter are subject to change without notice. We recommend the customer to consult our sales staff before purchasing.

Please obtain related materials form i-Core's regular channels and we are not responsible for its content if it is provided by sources other than our company.

In case of any conflict between the Chinese and English version, the version is subject to the Chinese one.